

4" SOFFIT/EAVE EXHAUST VENT

Dual door design
**KEEPS PESTS
OUT!**

Made in USA Patented Pending



Safer - More Efficient
Easily Pays for itself
in Energy Savings



Most Efficient
Maintenance Free
Vents on the Market

BENEFITS OTHERS CANNOT PROVIDE!

Closed position (not in operation)

- Birds and other pests cannot enter the "Exclusive Dual Door" design.
- Reduces energy robbing drafts from entering the residence through the vent.
- Clean look, fully closed design, no place for bees or wasps to nest.

Maintenance - Annual duct cleaning recommended for safety

- Ducts can be cleaned with lint brush from either side.
- Removable bottom panel for easy duct cleaning without removing the entire vent from the soffit & duct.
- Makes multi-story installation cleaning possible from the inside without using ladders.
- Tough U/V resistant plastic resists sunlight and cracking.

04.4 Exhaust installation. Dryer exhaust ducts for clothes dryers shall terminate on the outside of the building and shall be equipped with a backdraft damper. **Screens shall not be installed at the duct termination.** Ducts shall not be connected or installed with sheet metal screws or other fasteners that will obstruct the exhaust flow. Clothes dryer exhaust ducts shall not be connected to a vent connector, vent or chimney. Clothes dryer exhaust ducts shall not extend into or through ducts or plenums.

Open position (in operation)

- Most efficient air flow vent in the industry for reduced clothes drying time.
- No screen or guard to collect lint, plug-up and reduce air flow efficiency.
- Reduces dryer fire hazard caused by lint build-up.

Compare the No Pest Vent to our competition

- Vents with one-piece flap or 2 to 4 louvers. Opening with their beaks, birds quickly build a nest for a well heated home.
- Lint buildup causes unreliable louver closure allowing drafts and easier entry for birds.
- Vents with screen, floating shuttle, or add on guards for existing vents.
- Require weekly or monthly cleaning of lint buildup.
- Lint buildup restricts flow which reduces dryer efficiency and creates a fire hazard.
- Used for clothes dryer, bathroom and stove/range hood exhaust vents.

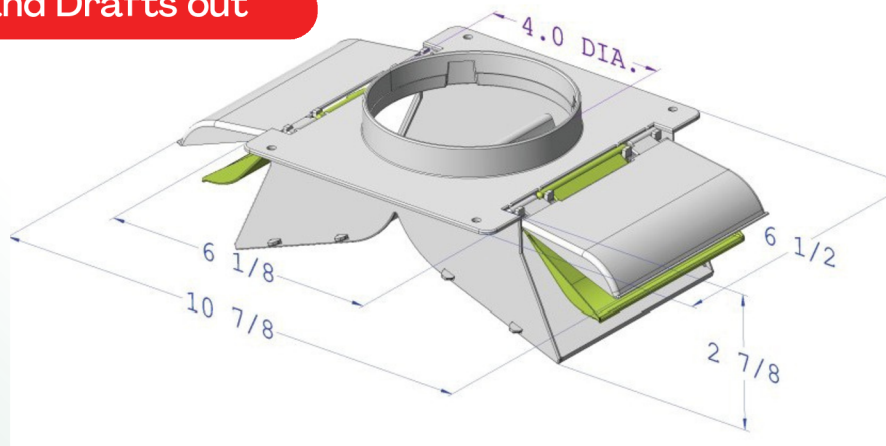
UNDER EAVE MOUNT WITH DUAL EXIT AND DUAL DOORS

Made in USA Patented Pending



Allows high air flow yet keeps Pests and Drafts out

- Tough U/V stable material resists sunlight and cracking.
- The Soffit/Eave vent can be used for any dryer, bathroom or range exhaust fan application.

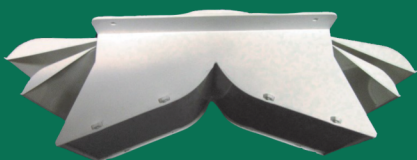


Features

- Removable bottom panel for easy duct cleaning without removing the entire vent from the soffit & duct.
- Available with 4 inch diameter, 12 inch long snap fit duct pipe
- Used for clothes dryer, bathroom and stove/range hood exhaust vents.
- Fasten vent to building with screws using provided mounting holes.

**Most Efficient
Maintenance Free
Vents on the
Market**

Dual Door design



Keeps Pests Out!

Removable Lower Plate



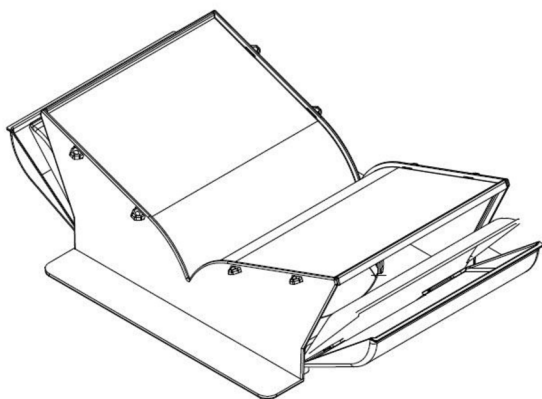
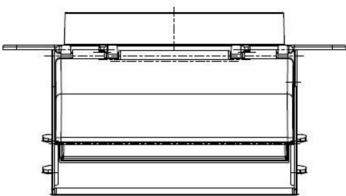
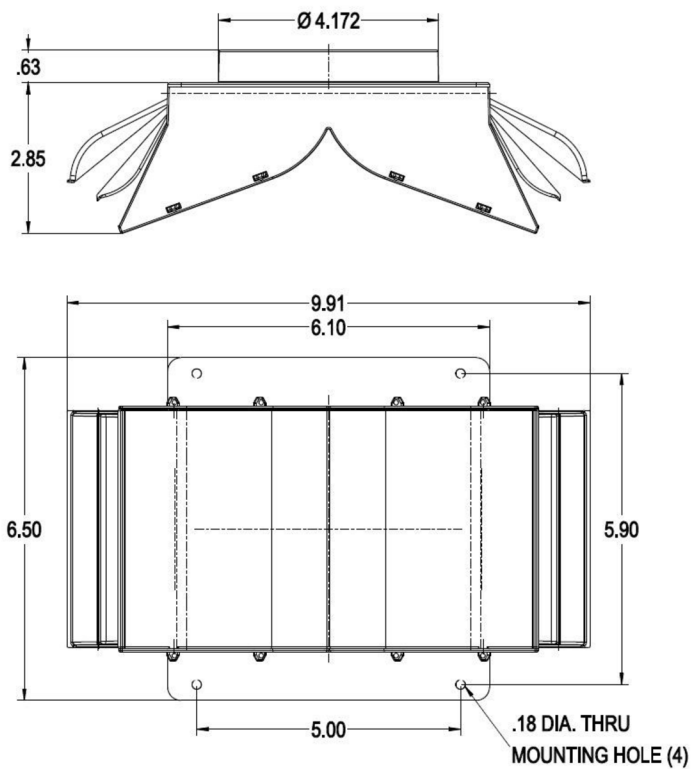
for easy duct cleaning

No-Pest Vent



Soffit

4" Soffit/Eave Vent Technical Product Specification



Model No.	Description	Color
4NPSEO- White	4" Soffit Eave No Pipe	White
4NPSEO- Tan	4" Soffit Eave No Pipe	Tan
4NPSEO- Brown	4" Soffit Eave No Pipe	Brown
4NPSEO- Onyx	4" Soffit Eave No Pipe	Onyx

Performance Data

Product Use:

- Dryer Exhaust Termination
- Bathroom Exhaust Termination
- Complies w/ IMC 504.4 & IRC 1502.3

Materials:

- USA Sourced 20% Talc Filled Polypropylene
- UV Inhibitor= 15,000 kJ/m2 before failure equal to 10-15 years in Florida sun
- Melting Point: Approx 325° F (163° C)

General Information

Benefits:

- Blocks Birds and other pests from entering exhaust system without the use of cages or screens.
- Dual door design allows two back draft dampers eliminating the need for an additional back draft damper on the interior and completely seals system from outside air.
- Bottom plate snaps in for easy removal allowing for easy cleaning without any tools 4 holes for easy mounting
- Dual Door has low back pressure differential and High Exhaust efficiency
- High Grade American Talc Filled Polypropylene

Features:

- Patented Dual Door Design
- Removable bottom panel

Manufactured By:

P-tec Products, Inc

248 N Church St.
Zeeland, MI 49464
616-772-0659
Nopestvent.com
Home of the

