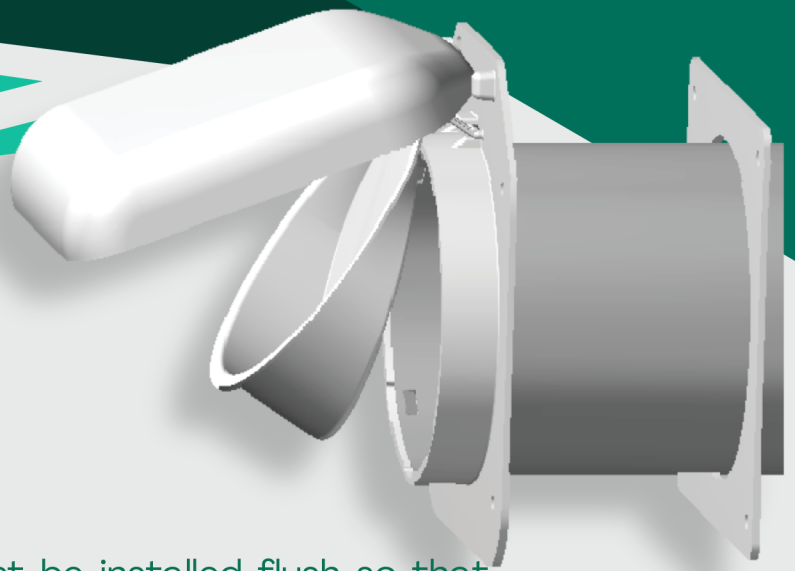


LOW PROFILE

Made in USA Patented 



Most Efficient Maintenance Free Vents on the Market

Attention! Face plate must be installed flush so that doors close completely when not in use. Uneven installation will create a poor seal for doors.

NO-PEST
vent

BENEFITS THAT OTHERS CANNOT PROVIDE

Closed position (not in operation)

- Birds and other pests cannot enter the “Exclusive Dual Door” design.
- Reduces energy robbing drafts from entering the residence through the vent.
- Clean look, fully closed design, no place for bees or wasps to nest.

Maintenance - Annual duct Cleaning Recommended

- Ducts can be cleaned with lint brush from either side.
- Makes multi-story installation cleaning possible from the inside without using ladders.
- Tough U/V resistant plastic resists sunlight and cracking.

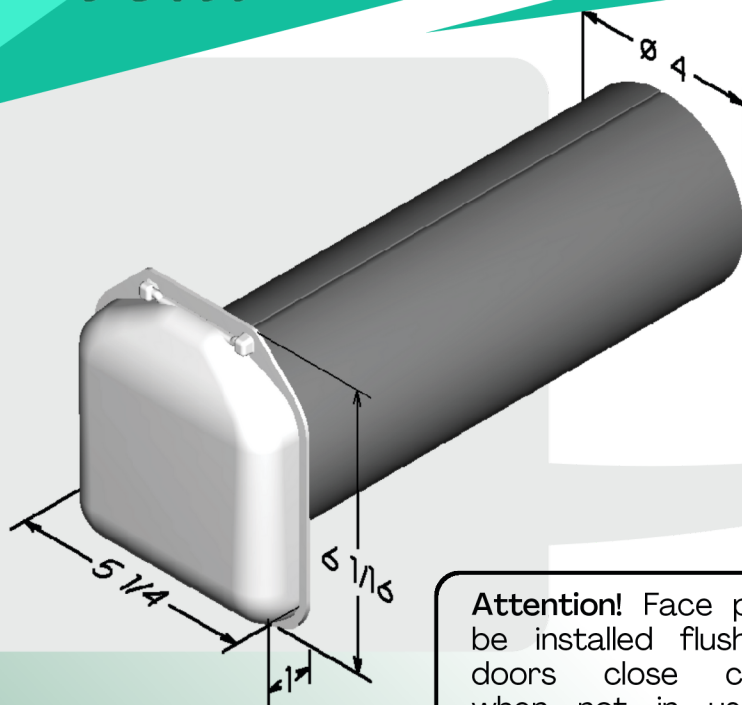
Features

- Includes 4 inch diameter 12 inch long duct pipe.
- Used for clothes dryer, bathroom and stove/range hood exhaust vents.

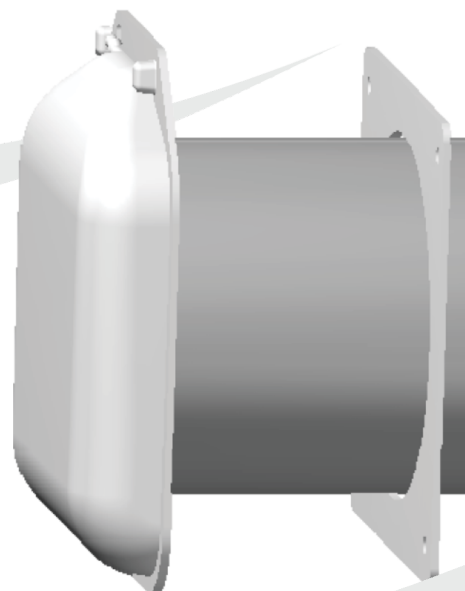
- Birds and other pests cannot enter the “Exclusive Dual Door” design.
- Reduces energy robbing drafts from entering the residence through the vent.
- Clean look, fully closed design, no place for bees or wasps to nest.

Compare the No Pest Vent to our Competition

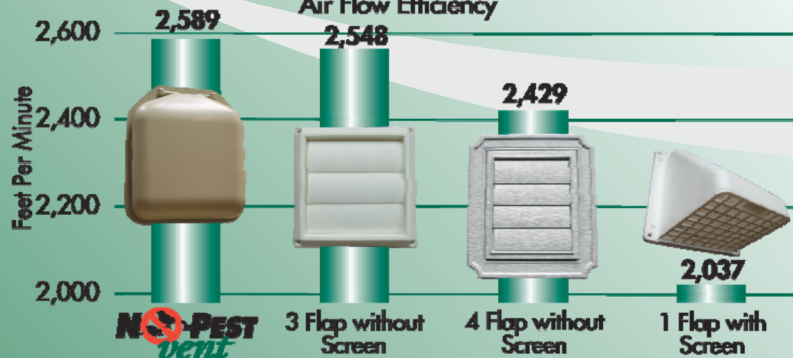
- Vents with one-piece flap or 2 to 4 louvers.
- Opening with their beaks, birds quickly build a nest for a well heated home.
- Lint buildup causes unreliable louver closure allowing drafts and easier entry for birds.
- Vents with screen, floating shuttle, or add-on guards for existing vents. Require weekly or monthly cleaning of lint buildup.
- Lint buildup restricts flow which reduces dryer efficiency and creates a fire hazard.



Attention! Face plate must be installed flush so that doors close completely when not in use. Uneven installation will create a poor seal for doors



No-Pest Vent™ vs. Other Exhaust Vents Air Flow Efficiency



Available in multiple colors



White



Tan



Brown

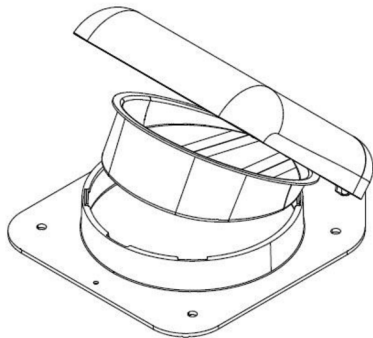
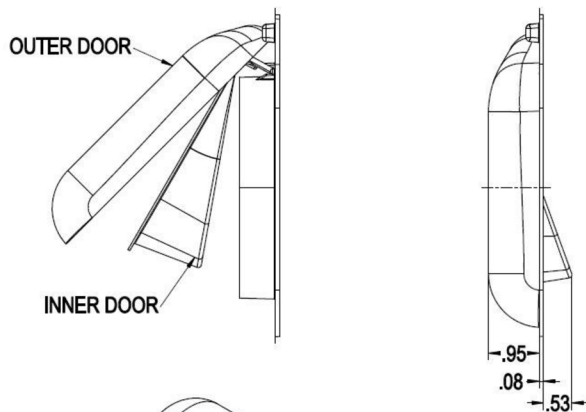
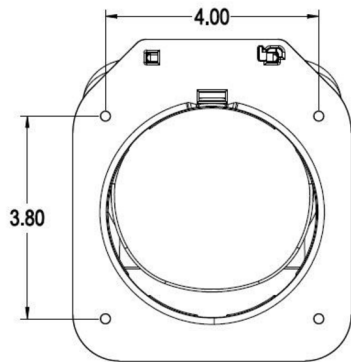
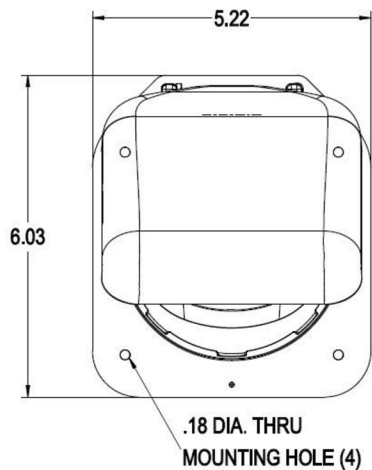
2009 INTERNATIONAL MECHANICAL
CODE®

504.4 Exhaust installation. Dryer exhaust ducts for clothes dryers shall terminate on the outside of the building and shall be equipped with a backdraft damper. **Screens shall not be installed at the duct termination.** Ducts shall not be connected or installed with sheet metal screws or other fasteners that will obstruct the exhaust flow. Clothes dryer exhaust ducts shall not be connected to a vent connector, vent or chimney. Clothes dryer exhaust ducts shall not extend into or through ducts or plenums.



4" Low Profile

Technical Product Specification



Model No.	Description	Color
4NPLPO- White	4" Low Profile No Pipe	White
4NPLPO- Tan	4" Low Profile No Pipe	Tan
4NPLPO- Brown	4" Low Profile No Pipe	Brown
4NPLPO- Onyx	4" Low Profile No Pipe	Onyx

Performance Data

Product Use:

- Dryer Exhaust Termination
- Bathroom Exhaust Termination
- Complies w/ IMC 504.4 & IRC 1502.3

Materials:

- USA Sourced 20% Talc Filled Polypropylene
- UV Inhibitor= 15,000 kJ/m2 before failure
- equal to 10-15 years in Florida sun
- Melting Point: Approx 325° F (163° C)

General Information

Benefits:

- Blocks Birds and other pests from entering exhaust system without the use of cages or screens.
- Dual door design allows two back draft dampers eliminating the need for an additional back draft damper on the interior and completely seals system from outside air.
- Small frame for tight mounting applications.
- Low profile Design
- Dual Door has low back pressure differential and High Exhaust efficiency
- High Grade American Talc Filled Polypropylene

Features:

- Patented Dual Door Design
- Magnetic Door Retention

Manufactured By:

P-tec Products, Inc

248 N Church St.
Zeeland, MI 49464
616-772-0659
Nopestvent.com
Home of the

